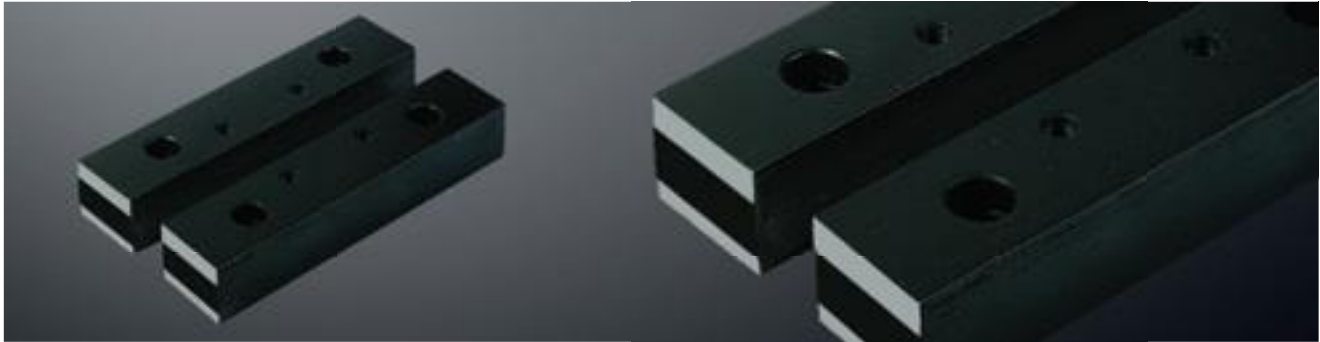
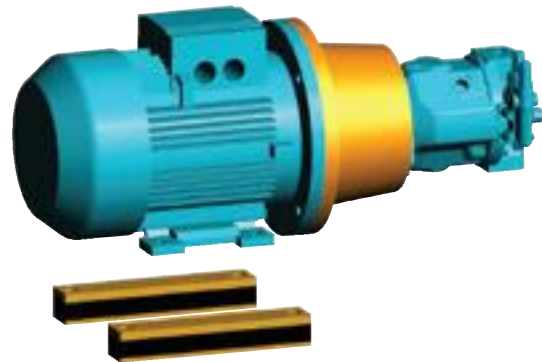
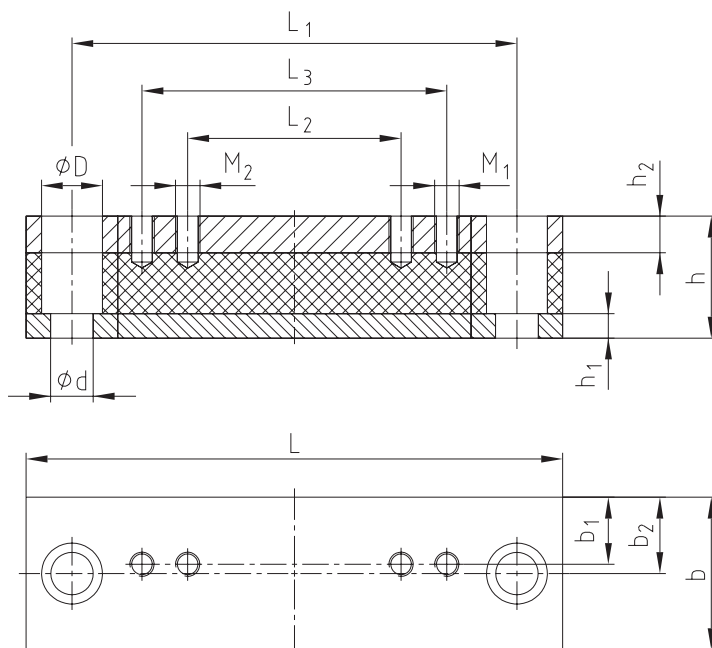


# DAMPING ELEMENTS HYDRAULIC COMPONENTS

## Damping rods type DSM



Type DSM



Damping rods type DSM for electric motors type IMB 35, protection IP 54															
Damping rod size	For motor size	Dimensions [mm]													
		L	L <sub>1</sub>	L <sub>2</sub>	L <sub>3</sub>	h	h <sub>1</sub>	h <sub>2</sub>	b	b <sub>1</sub>	b <sub>2</sub>	d	D	M <sub>1</sub>	M <sub>2</sub>
DSM 71	71	196	156	90		40	8	12	50	21	25	14	20	M6	
DSM 80	80	176	146	100		40	8	12	50	22	25	14	20	M8	
DSM 90 S	90 S	196	156	100		40	8	12	50	24,5	25	14	20	M8	
DSM 90 L	90 L	240	205	125		40	8	12	50	24	25	14	20	M8	
DSM 100 L/112 M	100 L/112 M	240	205	140		40	8	12	50	22	25	14	20	M10	
DSM 132 S/132 M	132 S/132 M	280	245	140	178	45	8	12	50	20	25	14	20	M10	M10
DSM 160 M	160 M	340	300	210		60	15	15	70	28	35	18	26	M12	
DSM 160 L	160 L	416	370	254		60	15	15	70	28	35	18	26	M12	
DSM 180 M	180 M	416	370	241		60	15	15	70	35	35	18	26	M12	
DSM 180 L	180 L	446	400	279		60	15	15	70	35	35	18	26	M12	
DSM 200 L	200 L	492	430	305		60	15	15	70	35	35	22	33	M16	
DSM 225 S	225 S	492	430	286		60	15	15	70	35	35	22	33	M16	
DSM 225 M	225 M	492	445	311		60	15	15	70	35	35	22	33	M16	
DSM 250 M	250 M	492	445	349		60	15	15	100	50	50	22	33	M20	
DSM 280 S/280 M	280 S/280 M	614	570	368	419	60	15	15	100	50	50	22	33	M20	M20
DSM 315 S/315 M	315 S/315 M	614	570	406	457	60	15	15	120	60	60	22	33	M24	M24
DSM 315 L	315 L	704	660	508		60	15	15	120	60	60	22	33	M24	

Other sizes on request.

Ordering example:	DSM	100 L/112 M
	Damping rod	Size