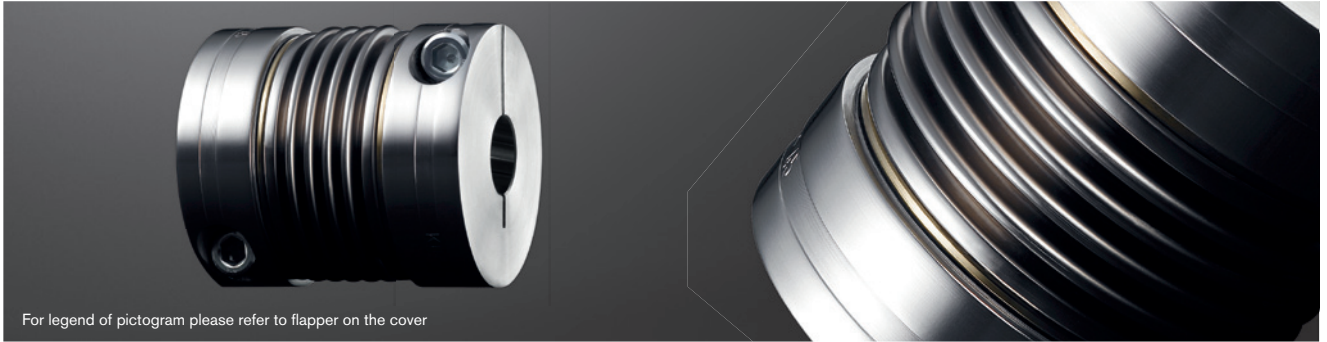


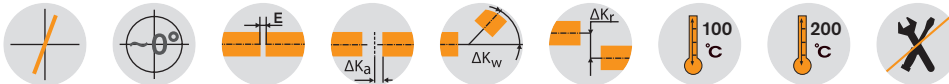
TOOLFLEX® S

Metal bellow-type couplings

Type S: With clamping hubs



For legend of pictogram please refer to flapper on the cover



TOOLFLEX® Type S with clamping hubs

Size	Dimensions [mm]											
	Min./max. finish bore		General					Clamping screws DIN EN ISO 4762				
	min. d	max. d	L	l ₁ ; l ₂	E	D _H	d _H	M ₁	D ₃	t ₁	e ₁	T _A [Nm]
7	3	7	24	9	6	15	9	M2	16,5	3,2	5	0,37
9	3	9	29	11	7	20	12	M2,5	21,5	3,5	7,1	0,76
12	4	12	34,5	13	8,5	25	16	M3	26,5	4	8,5	1,34
16	5	16	45	17,0	11	32	20	M4	35,0	5	12,0	2,9
20	8	20	55	21,5	12	40	27	M5	43,5	6	14,5	6
30	10	30	63	23,0	17	55	33	M6	58,0	7	19	10
38	12	38	69	25,5	18	65	42	M8	72,6	9	25	25
42	14	42	84	30,0	24	70	46	M8	76,1	9	27	25
45	14	45	86,5	32,0	22,5	83	58	M10	89,0	11	30	49
55 Al	20	55	111	40,0	31	100	73	M12	106,0	14	37	86
55 ³⁾	20	55	111	40,0	31	100	73	M12	106,0	14	37	120
65 ³⁾	30	65	126	45,0	36	125	95	M14	127,2	15	45	185

NEW

Technical data

Size	Bellow-hub connection	Torque of bellow T _{KN} ¹⁾ [Nm]	Max. speed n [rpm]	Hub material	Moment of inertia ²⁾ [x10 ⁻⁸ kgm ²]	Torsion spring stiffness C _T [Nm/rad]	Axial spring stiffness [N/mm]	Radial spring stiffness [N/mm]	Perm. displacements			Weight ²⁾ [kg]
									Axial [mm]	Radial [mm]	Angular [degrees]	
7	Bonded	1	31800	Aluminium	0,26	390	—	—	±0,3	0,10	0,7	0,007
9		1,5	23800	Aluminium	0,97	750	—	—	±0,35	0,15	1,0	0,014
12		2	19100	Aluminium	2,6	1270	—	—	±0,4	0,15	1,0	0,025
16		5	14900	Aluminium	9	4500	43	138	±0,3	0,15	1,0	0,06
20		15	11950	Aluminium	30	9600	63	189	±0,4	0,15	1,0	0,12
30	Flanged	35	8700	Aluminium	114	17800	97	233	±0,5	0,20	1,5	0,24
38		65	7350	Aluminium	245	37400	108	318	±0,6	0,20	1,5	0,35
42		95	6820	Aluminium	396	54700	120	499	±0,6	0,20	1,5	0,49
45		170	5750	Aluminium	931	95800	132	738	±0,9	0,20	1,5	0,82
55 Al		340	4800	Aluminium	1665	144100	160	894	±1,1	0,25	1,5	1,50
55 ³⁾	340	4800	Stahl	4996	144100	160	894	±1,0	0,25	1,5	3,20	
65 ³⁾	600	3850	Stahl	13318	322740	212	1365	±1,0	0,30	1,5	5,50	

¹⁾ For selection see page 18 et seqq.

²⁾ Details referring to the overall coupling with max. bore

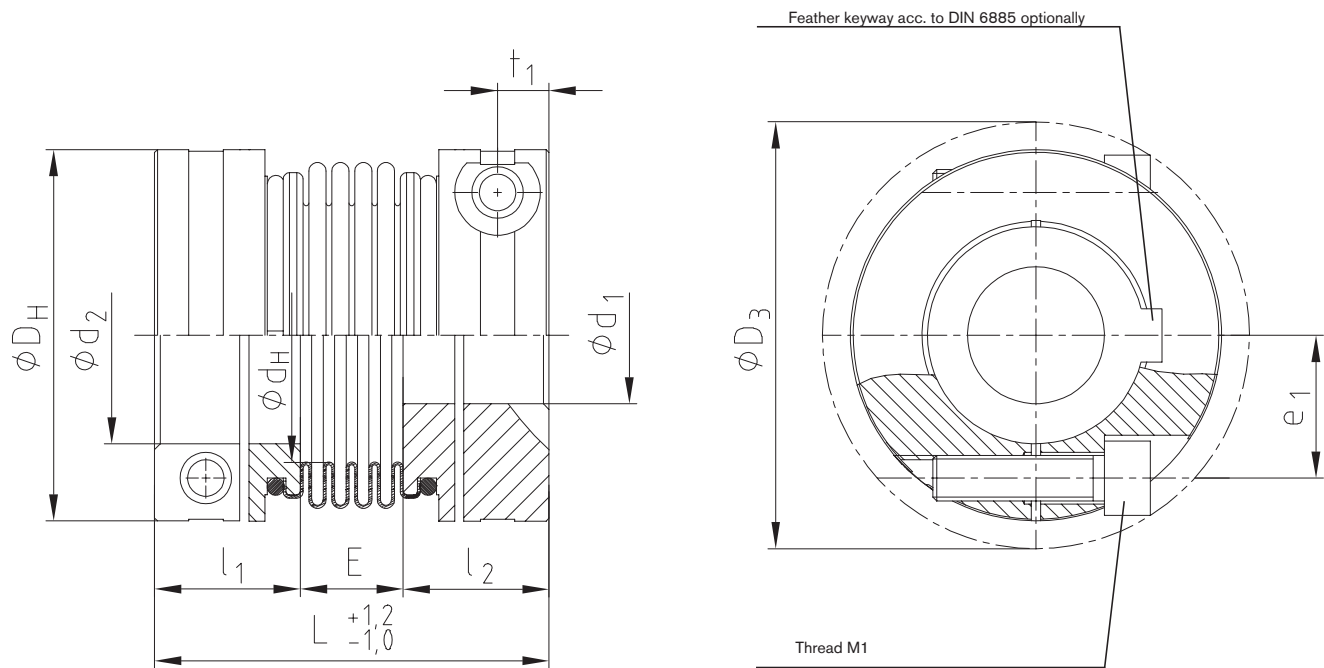
³⁾ Hub made of steel welded to bellow

Review of shaft-hub-connection: Friction torques for hub type 2.5

Size	Ø3	Ø4	Ø5	Ø6	Ø7	Ø8	Ø9	Ø10	Ø11	Ø12	Ø14	Ø15	Ø16	Ø18	Ø19	Ø20	Ø24	Ø25	Ø28	Ø30	Ø32	Ø35	Ø38	Ø40	Ø42	Ø45	Ø50	Ø55	Ø60	Ø65	
7	0,84	0,91	0,97	1,04	1,10																										
9	1,87	1,98	2,09	2,20	2,31	2,41	2,52																								
12		3,48	3,65	3,81	3,98	4,14	4,31	4,48	4,64	4,81																					
16			8,5	8,8	9,1	9,4	9,7	9,9	10,2	10,5	11,1	11,4	11,7																		
20						17,6	18,1	18,6	19,1	19,5	20,5	21,0	21,4	22,4	22,9	23,3															
30									33,1	33,8	35,1	35,8	36,5	37,8	38,5	39,2	41,9	42,5	44,6	45,9											
38											79,2	80,4	81,7	84,2	85,4	86,6	91,6	92,8	96,5	99,0	102	105	109								
42												84,2	85,4	86,6	89,1	90,3	91,6	96,5	97,8	102	104	106	110	114	116	119					
45																157	165	167	173	177	181	187	193	197	200	206					
55 Al																270	281	284	293	298	304	313	321	327	333	341	356	371			
55 ³⁾																	397	401	413	421	429	442	454	462	470	482	502	523			
65 ³⁾																					720	732	750	768	780	792	810	840	870	900	930

Ordering-example:

TOOLFLEX® 30 S	2.5	Ø25	2.5	Ø30
Size and type of coupling	Hub type	Finish bore	Hub type	Finish bore

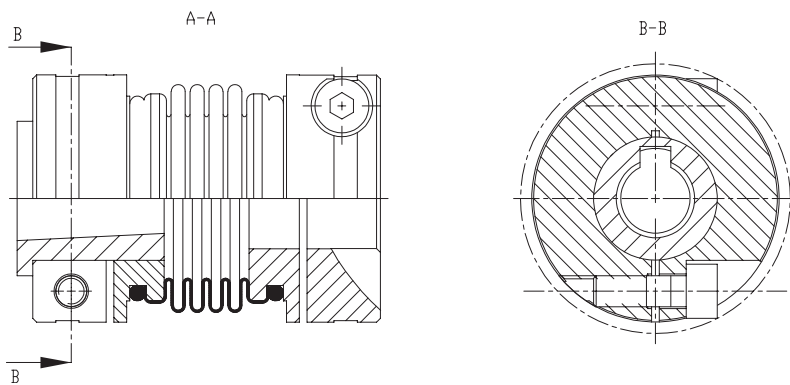


ROTEX® GS

TOOLFLEX®

Backlash-free servo couplings

Other types:
Type for FANUC motors



RADEX®-NC

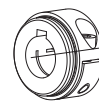
Hub types

Type 2.5



Clamping hub, double slotted, without feather keyway

Type 2.6



Clamping hub, single slotted, with feather keyway

COUNTEX®