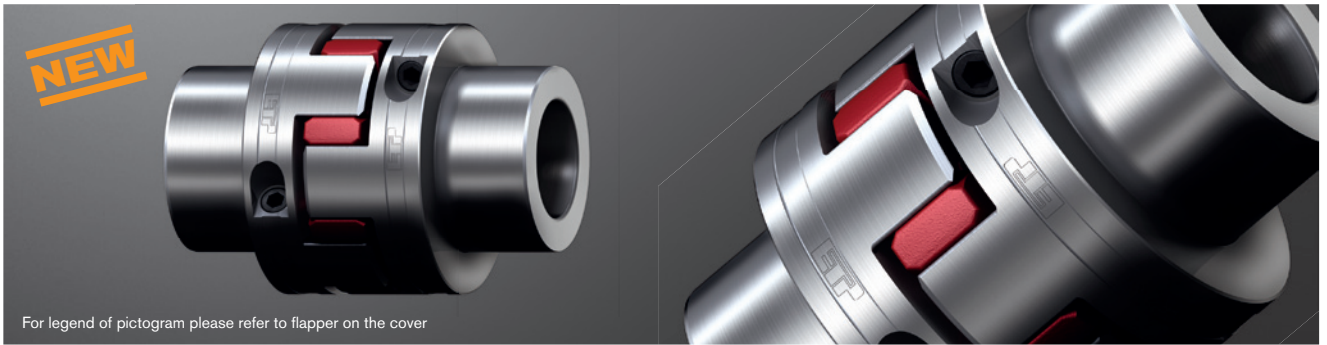


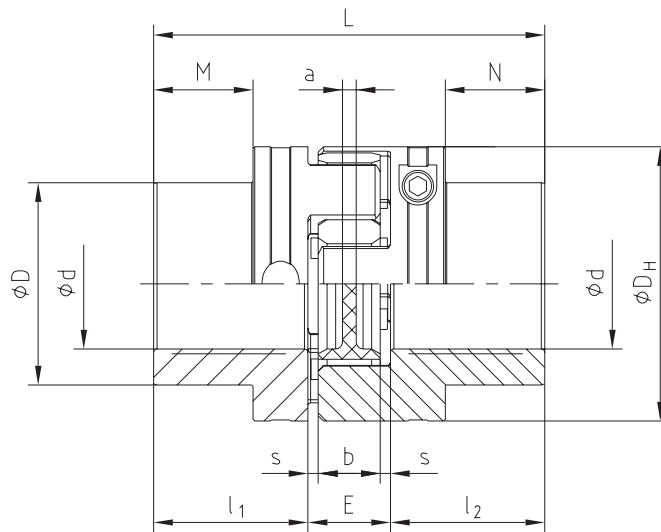
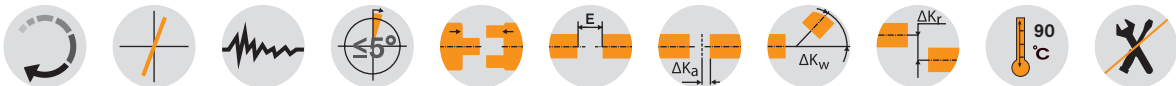
ROTEX® GS ETP®

Backlash-free jaw couplings

Integriertes hydraulisches Spannsystem



For legend of pictogram please refer to flapper on the cover



ROTEX® GS ETP®																
Size	Torque of spider TKN [Nm] ¹⁾			Dimensions [mm]										Screw		Weight per hub with max. bore [kg]
	92 Sh-A	98 Sh-A	64 Sh-A	"max. bore Ø"	DH ²⁾	dH	L	l ₁ ; l ₂	l ₃	E	b	s	a	M	T _A [Nm]	
24	35	60	75	24	55	27	78	30	30	18	14	2	3	M6	5	0,33
28	95	160	200	32	65	30	90	35	35	20	15	2,5	4	M6	5	0,53
38	190	325	405	40	80	38	114	45	45	24	18	3	4	M6	5	0,98
42	265	450	560	48	95	46	126	50	50	26	20	3,5	4	M6	5	1,51

¹⁾ Other spiders/selection on request

²⁾ ØDH + 2 mm with high speeds for expansion of spider

Überprüfung der Welle-Nabe-Verbindung: Reibschlussmomente für Nabenausführung ROTEX® GS ETP®																	
Size	Tolerance fit	d / D															
		Ø 15 / Ø 24	Ø 16 / Ø 26	Ø 19 / Ø 30	Ø 20 / Ø 32	Ø 24 / Ø 39	Ø 25 / Ø 40	Ø 28 / Ø 44	Ø 30 / Ø 47	Ø 32 / Ø 50	Ø 35 / 55	Ø 38 / Ø 59	Ø 40 / Ø 62	Ø 42 / Ø 65	Ø 45 / Ø 70	Ø 48 / Ø 74	
14	F6 / k6	42	50	70	80	125											
19		50	60	80	95	150	160	210	230	250							
24						220	230	310	350	380	450	570	610				
28							270	360	410	440	540	660	730	820	940	1100	

ETP® is a registered trademark by ETP® Transmission AB.

Ordering example:	ROTEX® GS-ETP	98 Sh-A-GS	d 20	GS-ETP - Ø 24		GS-ETP - Ø 20	
	Coupling size	Spider hardness	Optional bore in spider	Hub type	Finish bore	Hub type	Finish bore