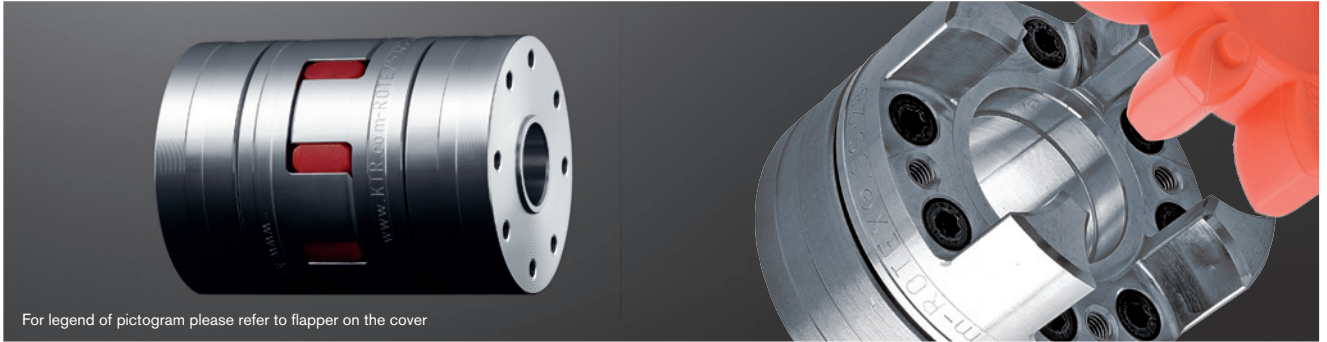


# ROTEX® GS Clamping ring hubs light Backlash-free jaw couplings

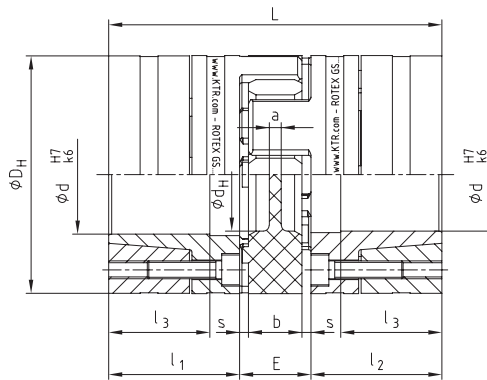
Integrated clamping system made of aluminium



For legend of pictogram please refer to flapper on the cover



Tack thread M1 between clamping screws



ROTEX® GS clamping ring hubs light

Size	Spider torque T <sub>KN</sub> [Nm] <sup>1)</sup>					Dimensions [mm]								Clamping screws DIN EN ISO 4762			Weight per hub with max. bore [kg]	Mass moment of inertia per hub with max. bore [kg m <sup>2</sup> ]	
	92 Sh-A	98Sh-A	64 Sh-D	maxi.d	D <sub>H</sub> <sup>2)</sup>	d <sub>H</sub>	L	l <sub>1</sub> ; l <sub>2</sub>	l <sub>3</sub>	E	b	s	a	M	Num- ber z	T <sub>A</sub> [Nm]			M <sub>1</sub>
14	7,5	12,5	16,0	14	30	10,5	50	18,5	13,5	13	10	1,5	2,0	M3	4	1,34	M3	0,032	0,04 x 10 <sup>-4</sup>
19	12	21	26	20	40	18	66	25	18	16	12	2,0	3,0	M4	6	3	M4	0,077	0,19 x 10 <sup>-4</sup>
24	35	60	75	32	55	27	78	30	22	18	14	2,0	3,0	M5	4	6	M5	0,162	0,78 x 10 <sup>-4</sup>
28	95	160	200	38	65	30	90	35	27	20	15	2,5	4,0	M5	8	6	M5	0,240	1,70 x 10 <sup>-4</sup>
38	190	325	405	48	80	38	114	45	35	24	18	3,0	4,0	M6	8	10	M6	0,490	5,17 x 10 <sup>-4</sup>
42	265	450	560	51	95	46	126	50	35	26	20	3,0	4,0	M8	4	25	M8	0,772	11,17 x 10 <sup>-4</sup>
48	310	525	655	55	105	51	140	56	41	28	21	3,5	4,0	M10	4	49	M10	1,066	18,81 x 10 <sup>-4</sup>

<sup>1)</sup> Other spiders/selection see page 18 et seqq.

<sup>2)</sup> ØD<sub>H</sub> + 2 mm with high speeds for expansion of spider

Review of shaft-hub-connection: Friction torques for hub type 6.0 light

Size		Ø6	Ø8	Ø9	Ø10	Ø11	Ø14	Ø15	Ø16	Ø19	Ø20	Ø24	Ø25	Ø28	Ø30	Ø32	Ø35	Ø38	Ø40	Ø42	Ø45	Ø48	Ø50	Ø55*		
14	H7/k6	6,9	11	16	17	22	31																			
	H7/h6	4,7	8	13	14	19	22																			
19	H7/k6				28	35	51	61	43	68	78															
	H7/h6				23	30	44	55	32	58	70															
24	H7/k6						72	85	79	119	134	145	160	211	177	199										
	H7/h6						64	79	67	106	124	108	123	172	147	157										
28	H7/k6							120	177	161	247	271	305	355	294	366	382									
	H7/h6							102	160	132	224	250	281	336	222	294	311									
38	H7/k6									248	376	411	486	563	553	673	665	748	832	732	848					
	H7/h6									210	344	382	453	536	454	577	550	632	718	614	732					
42	H7/k6													559	645	666	806	859	957	924	1069	1221	1229			
	H7/h6													522	616	558	703	800	909	806	960	1125	1173			
48	H7/k6														706	795	962	1047	1165	1160	1339	1527	1393	1662		
	H7/h6														650	735	914	983	1110	1025	1216	1422	1207	—		

\* Standard bore tolerance H7, special tolerances on request \* From Ø55 tolerance G7/m6

With a bigger fit clearance the torque is reduced. Steel or nodular iron with a yield strength of approx. 250 N/mm<sup>2</sup> or more can be used as shaft material. For the strength calculation of shaft/hollow shaft see KTR standard 45510 on our homepage www.ktr.com.

Ordering example:	ROTEX® GS 24	98 Sh-A-GS	d20	6.0 light – Ø 24		6.0 light – Ø 20	
	Coupling size	Spider hardness	Optional: Bore in spider	Hub type	Finish bore	Hub type	Finish bore